

青岛鑫光正钢结构股份有限公司

QINGDAO XINGUANGZHENG STEEL STRUCTURE CO.,LTD.

电话: 0532-83308888

网址: www.qdxgz.cn

地址: 中国山东青岛平度深圳路268号

Tel: 0532-83308888

Http: [//www.qdxgz.cn](http://www.qdxgz.cn)

Add: No.268 Shenzhen Road, Pingdu, Qingdao, China



CORPORATE BROCHURE 2021

青 岛 鑫 光 正 钢 结 构 股 份 有 限 公 司
QINGDAO XINGUANGZHENG STEEL STRUCTURE CO.,LTD.



—

让客户更幸福
Give clients happiness

20+

20多年稳步发展
STEADY DEVELOPMENT FOR OVER 20 YEARS

6

六大生产厂区
6 MAIN PRODUCTION FACTORIES

12

12论，企业文化核心
THE 12 CORPORATE PRINCIPLES, THE CORE OF
CORPORATE CULTURE

80+

国际化合作伙伴分布80多个国家
INTERNATIONAL PARTNERS IN MORE THAN 80 COUNTRIES

360°

360度全方位调度
FULL-SCALE DISPATCH

100+

百余名高级技术人才组成的研发团队
R&D TEAMS INCLUDING MORE THAN 100 SENIOR ENGINEERS





CONTENTS

宣传册目录

Brochure contents

2021版

01

企业简介
Company profile

企业介绍

Enterprise introduction

02

公司愿景
Company vision

两大愿景

Two visions

03

发展历程
Development history

1997-未来

1997 - the future

04

企业文化
Corporate culture

企业12论

On enterprise 12

05

资质荣誉
Qualifications and honors

集团荣誉
生产资质
认证资质

Group honor
Production qualification
Certification qualification

06

全球市场布局
Global market layout

遍布五大洲

All over five continents

07

两大全屋系统
Two whole house systems

钢结构全屋系统
畜牧养殖全屋系统

Steel structure whole house
system
Animal husbandry whole
house system

08

项目案例
Project cases

国内项目案例
国际项目案例

Domestic project cases
International project cases

XINGUANGZHENG GROUP

以客户满意为中心

1997

创始于1997年
FIRST ESTABLISHED IN 1997

31

出口到“一带一路”沿线31个国家
EXPORT TO 31 COUNTRIES ON "B&R"

80+

出口到80多个国家
EXPORT PRODUCTS TO OVER 80 COUNTRIES

100+

超过100人的研发团队
R&D TEAMS CONTAIN 100+ CLERKS

Company Profile / 公司简介

青岛鑫光正钢结构股份有限公司（简称：鑫光正）成立于1997年，历经20多年的稳步发展，现已成为集研发、设计、生产、安装施工和服务为一体的高科技、多元化、外向型的国际化民营企业，于2015年在新三板挂牌（股票代码：834422）。

公司凭借强大的技术能力及丰富的工程经验，不仅获得钢结构工程专业承包壹级资质和中国钢结构制造企业一级资质，还拥有防水防腐保温工程、建筑装饰装饰、建筑幕墙工程、建筑工程施工总承包等各项资质，被列入山东省建筑产业现代化生产基地，参与了胶东国际机场、青岛地铁、青岛航空技术研究院、和华科技物流小镇、海尔、海信、双星等项目，并与中建、中铁等国内大型企业形成战略合作关系。

为了更好服务于全球市场，公司取得CE认证（EN1090证书）、国际普通钢结构高等级证书及中国境外承包工程经营资格证书，在早于国家正式提出“一带一路”发展战略之前，就已经开始与“一带一路”沿线国家及相关企业进行合作，并面向全球市场积极探索国际化的发展并在印度、埃塞俄比亚建立合资公司，与菲律宾、阿尔及利亚等多个国家的客户形成全方位战略合作。公司核心竞争力的打造源自于长期对技术突破的不懈追求，现已有各类高级技术人才百余名，并与诸多的大学和科研机构建立了合作关系，借助内外部智力资源，以钢结构为依托，不断在新产品、新技术、新模式、新业态方面进行创新，持续实现“钢结构全屋系统”新的突破。

Qingdao Xinguangzheng Steel Structure Co., Ltd, founded in 1997, is now the first steel structure listed company (New OTC Market) of Qingdao after a 20-year stable development. It is the group member unit of China Steel Structure Association; the member of China Construction Metal Structure Association; committee unit of China Chamber of International Commerce, and is rated as Credit enterprise (class AAA) by Ministry of Commerce and SASAC of PRC. It has also been listed into the Modern Production Base of Construction Industry in Shandong Province and has achieved the honor of famous mark of Shandong Province.

Due to its powerful technique and rich engineering experience, XGZ has achieved National Professional Contractors for steel structure projects (class A); anti-water, anti-rust and thermal insulation; architectural decoration; Professional Contractors for architectural curtain wall (Class B), EN1090 Certification (CE); Global normal steel structure advanced certificate (EXC-3). XGZ has now become a high-tech, diversified and export-oriented international private enterprise integrating R&D, design, production, installation construction and service. XGZ has joined in many constructional projects: Haier, Hisense, Doublestar, Sinopec, Qingdao Jiaodong International Airport, Qingdao Metro, Qingdao Institute of Aeronautical Technology, Hehua Technology Logistics Town; and has cooperated with large enterprises like CSCEC and Power China.

XGZ have the Chinese Managing Qualification of external contractor for Construction by Chinese Ministry of Commerce, and has cooperated with B&R countries long before. We face European and American markets and seek for international development path; our partners are from Canada, Australia, Germany, France, Brazil, England, America, etc., more than 80 countries all over the world.

We have chosen the industrial mode of "Steel Structure+" under the guidance of global market; created our own corporate culture system; cooperated with Universities and Institutions; brought in numerous senior technical clerks; optimized our own organizational chart in form of wheel axis; established informationized ERP management. We have also innovated automated welding and NC equipments; built an elaborate ISO9001 quality control system prior to our counterparts; passed the third-party certification. We supply our clients consistently with high quality products as well as service.

ENTERPRISE PROSPECT

企业愿景

“ Whole
house
system ”



To be top brand of steel structure whole house system in the world
打造钢结构（全屋系统）世界第一品牌

To be top brand of animal husbandry whole house system in the world
打造畜牧养殖（全屋系统）世界第一品牌

CHASING DREAMS WITH EACH PASSING DAY

集团发展历程



起程：千里之行 始于足下

Start: A journey of a thousand miles begins with a single step

- (2002) 首条钢结构生产线建成投产，公司完成从钢材贸易向钢结构材料生产贸易的转型
- (2002) 青岛市鑫光正钢结构材料有限公司成立，开启了鑫光正发展史上一个新的里程碑
- (2001) 首台C型钢生产设备投产，生产加工范围不断扩大
- (2000) 首条复合板生产线上线，加工范围进一步扩大
- (1997) 购进首台波形压瓦机，标志着公司由钢材代销步入钢结构材料加工时代
- (1997) 投资建厂，平度市光正工贸有限公司成立

1997-2002



成长：想壮志凌云 做脚踏实地

Grow: Being down-to-earth makes great

- (2008) 国际业务公司陆续成立，国际业务进入快速发展阶段
- (2007) 投资建成钢结构一厂，同时两条钢结构生产线投入使用
- (2006) 获得钢结构施工二级资质
- (2005) 完成从钢结构材料贸易向钢结构工程的转型
- (2004) 投资建成钢结构配套厂区，专业生产钢结构工程维护材料
- (2004) 获得钢结构施工三级资质
- (2003) 钢结构工程施工建设启动

2003-2008



发展：蓄势沉淀 厚积薄发

Development: To rise abruptly based on its accumulated strength

- (2013) 投资建成钢结构三厂，同年建成集装箱房生产车间
- (2012) 公司以管理PK工作和利润放大为主线，继续深化和提升
- (2011) 获得高新技术企业证书
- (2010) 确定三大战略调整：人才结构、产品结构、经营结构三大结构调整，标志着公司开始进入规范管理的阶段
- (2009) 公司提出战略转型：从管理型向经营型转变，从管理行政型向管理服务型转变，从领导拉动发展向领导拉动、员工推动发展，向主导产品延伸并做大、做强、做精转型

2009-2013



发展: 蓄势沉淀 厚积薄发

Development: To rise abruptly based on its accumulated strength

- (2016.6) 取得建筑施工总承包三级资质
- (2016) 公司确立“信息化”战略、“走出去”战略,并设立阿尔及利亚及埃塞俄比亚分公司
- (2015.12) 青岛鑫光正钢结构股份有限公司正式挂牌新三板
- (2015) 获得山东省著名商标
- (2015.8) 青岛鑫光正钢结构股份有限公司正式成立
- (2014) 获得钢结构工程专业承包一级资质认证
- (2013.7) 确定以企业财务数据作为管理导向,筹备企业上市

2013-2016



未来: 激情务实 感恩跨越

Future: Passion Practicality Gratitude
Transcendence

- (2020年) 企业平台化,生态链及信任链建设、自裂变系统搭建
- (2019年) 打造钢结构全屋系统世界第一品牌,钢结构全屋系统世界第一品牌
- (2019年) 印度合资公司成立
- (2018年) “四新模式”助力“钢结构+”发展:新产品、新技术、新模式、新业态
- (2017年) 提出以“钢结构+”为主的全产业链打造;获得商务部和国资委颁布的企业信用评价AAA级信用企业
- (2016.11) 承建征和股份公司新厂区建设,为后期公司总承包项目发展奠定了坚实基础
- (2016.10) 取得对外承包工程资格证书

2016-未来

COMPANY CULTURE

企业文化

企业十二论

CASE ON ENTERPRISE TWELVE



01
论信仰

02
论梦想

03
论资产

04
论价值

05
论诚信

06
论智慧

07
论耐力

08
论业绩

09
论品牌

10
论执行

11
论学习

12
论管理高压线

CERTIFICATION HONOR

资质荣誉

生产资质和认证资质

PRODUCTION QUALIFICATION AND CERTIFICATION QUALIFICATION



GLOBAL MARKET LAYOUT

全球市场布局

80+

出口到80多个国家
EXPORT PRODUCTS TO OVER 80 COUNTRIES

建筑与结构设计-建造
制造
项目管理
完整的房屋系统

ARCHITECTURAL & STRUCTURAL
DESIGN-BUILD
FABRICATION
PROJECT MANAGEMENT
FULL HOUSE SYSTEM

31

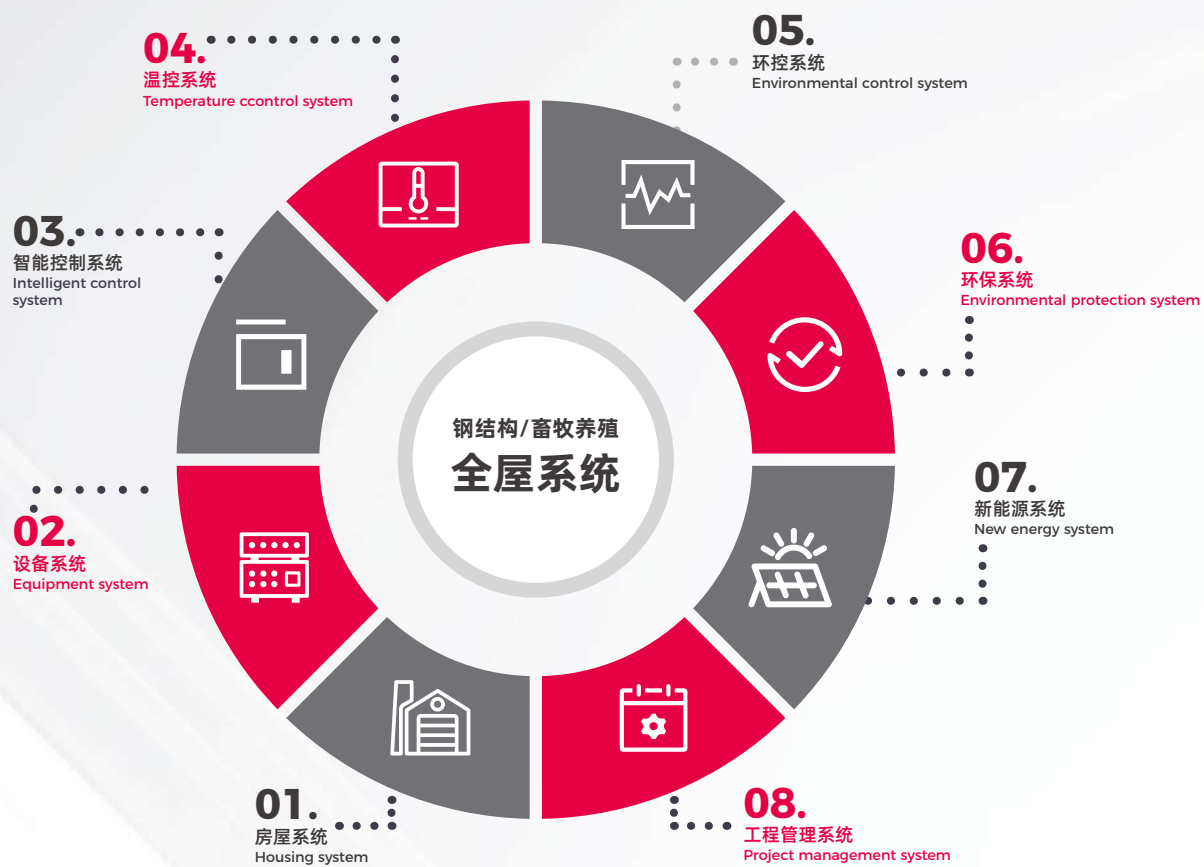
出口到“一带一路”沿线31个国家
EXPORT TO 31 COUNTRIES ON "B&R"





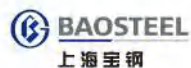
STEEL STRUCTURE/ANIMAL HUSBANDRY WHOLE HOUSE SYSTEM

钢结构/畜牧养殖全屋系统



STRATEGIC COOPERATION

战略合作



DOMESTIC PROJECT CASES 国内项目案例

项目名称：中杰时代天桥

项目地址：中国-青岛

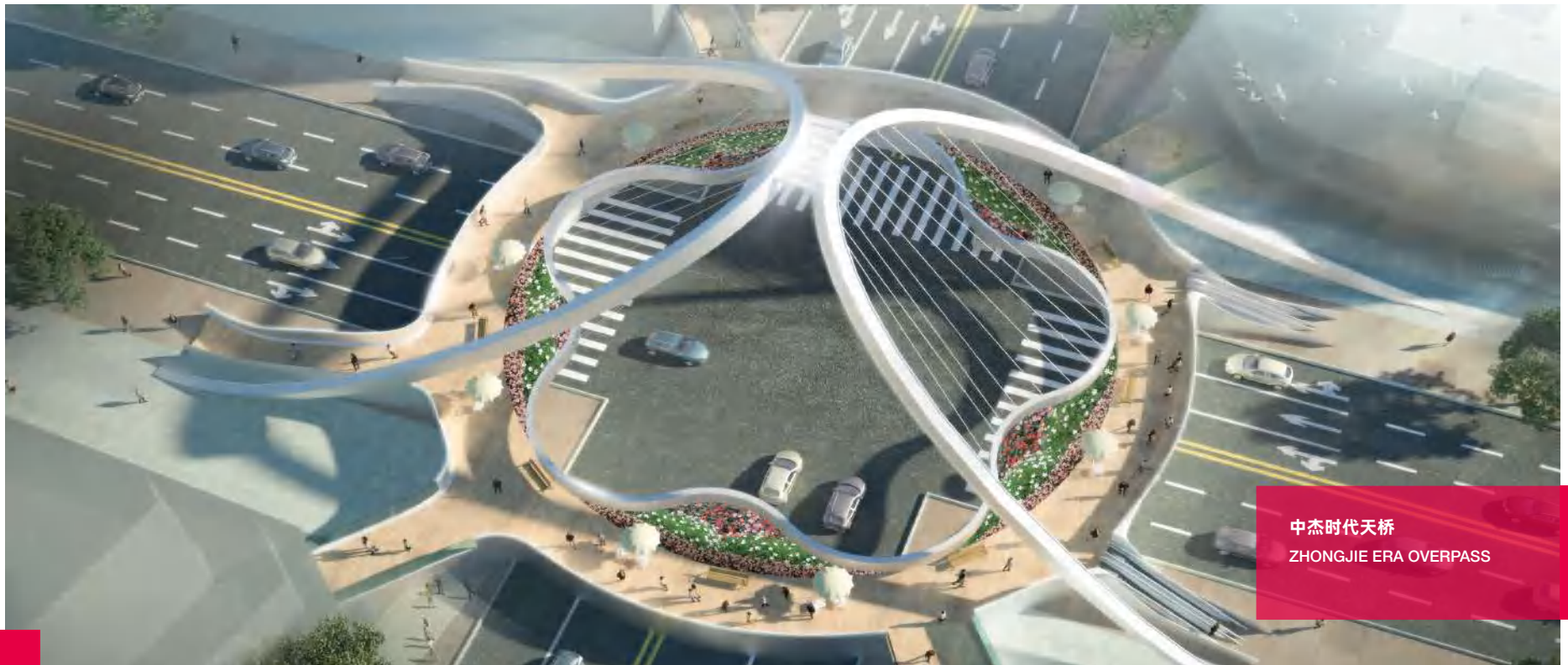
项目简介：中杰时代广场天桥项目是平度第一个跨街天桥工程，整个工程由三座天桥组成，东侧直行天桥桥身长度56.3米宽度5米，西侧直行天桥桥身长度49米宽度5米，中部圆形天桥主桥面直径56米，为花瓣造型，最窄处6.5米最宽12米，在红旗路上建设跨街天桥可以避免人车干扰，提高道路通行能力，并有效解决大量人流的过街效率及安全性的问题。

CASE PRESENTATION

Project Name: Zhongjie Era Overpass

Project Address: Qingdao, China

Project Brief Description: Zhongjie Era Overpass Project is Pingdu's first cross-street bridge project, the whole project consists of three overpasses, the east side of the straight overpass bridge length 56.3 meters wide 5 meters, the west side of the straight overpass bridge length 49 meters wide 5 meters, the middle of the circular overpass main bridge diameter 56 meters, petal shape, the narrowest 6.5 meters wide 12 meters.



中杰时代天桥
ZHONGJIE ERA OVERPASS

DOMESTIC PROJECT CASES

国内项目案例

项目名称：青岛高速新机场连接线

项目地址：中国-青岛

项目简介：此工程被称为市区到新机场的“迎宾大道”，是青岛中心城区“六横九纵”高快速网络的重要组成部分，是青岛有史以来投资规模最大、沿线条件最复杂、实施难度最大、工艺和技术要求最高的市政道路项目。建成后，将有效提高青岛新机场与市区的通勤效率、助推岛城经济发展。

CASE PRESENTATION

Project name: Qingdao New Airport High-Speed Connection Line

Project address: Qingdao, China

Project Brief Description: This project is called the "Yingbin Avenue" from the downtown area to the new airport. It is an important component of the "six horizontal and nine vertical" high and fast network in the central area of Qingdao. It is a municipal road project with the largest investment scale, the most complicated conditions along the route, the greatest difficulty in implementation, and the highest technological and technical requirements in the history of Qingdao.



青岛高速新机场连接线
QINGDAO EXPRESSWAY
NEW AIRPORT CONNECTION LINE

DOMESTIC PROJECT CASES 国内项目案例

项目名称：中国花卉博览会光明会议中心

项目地址：中国-上海

项目简介：中国花博会上海光明会议中心项目位于上海市崇明区东风农场，占地约2000平方米，为钢木混合结构。主体钢结构工程由鑫光正承接，采用管桁架结构制作安装，项目建成后将于花博会期间召开会议和新闻发布。

CASE PRESENTATION

Project name: Guangming Conference Center of China Flower Expo

Project address: Shanghai, China

Project Brief Description: China Flower Expo Shanghai Guangming Convention Center project is located in Dongfeng Farm, Chongming District, Shanghai, covering an area of about 2000 m². It is a steel and wood mixed structure. The main steel structure project is undertaken by XGZ, which adopts pipe truss structure for production and installation. After the completion of the project, it will be used to hold conferences and press conferences during the Expo.



中国花卉博览会光明会议中心
GUANGMING CONFERENCE
CENTER OF CHINA FLOWER EXPO

DOMESTIC PROJECT CASES

国内项目案例

项目名称：青岛地铁

项目地址：中国-青岛

项目简介：青岛-海阳城际（蓝色硅谷段）轨道交通工程总投资约195亿元。项目起于苗岭路站，止于盐田东站，线路全长58.44公里。全线以高架敷设为主，设置车站22座，包括4座地下站和18座高架站，平均站间距为2756米。

CASE PRESENTATION

Project name: Qingdao Metro

Project address: Qingdao, China

Project Brief Description: The total investment of the Qingdao-Haiyang intercity (blue Silicon Valley section) rail transit project is about 19.5 billion yuan. The project starts at miaoling road station and ends at yantian east station, with a total length of 58.44km. There are 22 stations, including 4 underground stations and 18 elevated stations, with an average station spacing of 2756 meters.



DOMESTIC PROJECT CASES

国内项目案例

项目名称：青岛欢乐海湾

项目地址：中国-青岛

项目简介：青岛欢乐海湾项目位于国家4A景区城市阳台内，是集购物、休闲、餐饮、游乐为一体的商业综合体，是西海岸新区的城市会客厅。鑫光正承接钢结构采光顶、钢结构连廊、楼梯等项目。

CASE PRESENTATION

Project name: Qingdao Happy Bay

Project address: Qingdao, China

Project Brief Description: Qingdao Happy Bay project is located in the national 4A scenic spot city balcony, is a commercial complex integrating shopping, leisure, catering and amusement, is the west coast new district of the city meeting room. XGZ undertake steel structure daylighting roof, steel structure corridor, stairs and other projects.



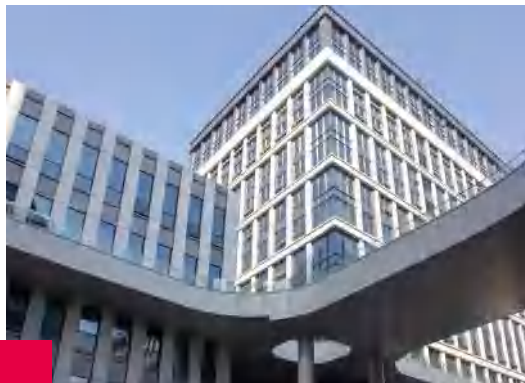
青岛欢乐海湾
QINGDAO HAPPY BAY

DOMESTIC PROJECT CASES 国内项目案例

项目名称：青岛国际院士港

项目地址：中国-青岛

项目简介：青岛国际院士产业核心区先导区规划建筑面积超过120万平方米，主要服务于生物医药领域的院士项目落地，是山东省、青岛市、李沧区三级联动重点项目，是推进青岛市“三中心一基地”建设，加快新旧动能转换的重要载体。我司承建连廊、钢梯、停机坪等钢结构工程。



CASE PRESENTATION

Project name: Qingdao International Academician Port

Project address: Qingdao, China

Project Brief Description: The pilot area of Qingdao International Academician Industry Core Area has a planned construction area of over 1.2 million square meters. It is a key three-level linkage project of Shandong Province, Qingdao City and Licang District. It is an important carrier to promote the construction of "Three Centers and One Base" in Qingdao City and accelerate the transformation of old and new driving forces. Our company contracted to build corridor, steel ladder, apron and other steel structure construction.



青岛国际院士港
QINGDAO INTERNATIONAL
ACADEMICIAN PORT

DOMESTIC PROJECT CASES

国内项目案例

项目名称: 北苑商砼

项目地址: 中国-青岛

项目简介: 青岛北苑环保建材有限公司是山东地区最大规模商品混凝土企业之一, 此项目由网架仓库、重钢厂房、轻钢厂房组成, 总建筑面积为16325.1平方米。



CASE PRESENTATION

Project name: Beiyuan Commercial Concrete

Project address: Qingdao, China

Project Brief Description: Qingdao Beiyuan Environmental Protection Building Materials Co., Ltd. is one of the largest commercial concrete enterprises in Shandong. This project consists of grid warehouse, heavy steel workshop and light steel workshop, with a total construction area of 16325.1 square meters.



DOMESTIC PROJECT CASES 国内项目案例

项目名称：平度同和汉缆五期厂区

项目地址：中国-青岛

项目简介：同和汉缆五期新建厂区项目规划建筑面积4.8万平方米，主钢构约2000吨，工程于2020.7.15日第一区块材料进场施工到2020.10.15日项目全部安装完成，历时90天提前10天完成。是我司2020年承建的最高门式钢架工程，标志着鑫光正钢结构在安装方面创造了新的高度，创造了工程面积、施工高度、完工时间新的里程碑。



CASE PRESENTATION

Project name: Pingdu Tonghe Hanlan Phase V Plant

Project address: Qingdao, China

Project Brief Description: The planned construction area of Tonghe Hanlan Phase 5 newly built plant is 48,000 square meters, and the main steel structure is about 2,000 tons. The project was completed from July 15, 2020. The first block material was put into construction to October 15, 2020. All the projects were installed, which lasted 90 days and was completed 10 days in advance.



平度同和汉缆五期厂区
PINGDU TONGHE HANLAN
PHASE V PLANT

DOMESTIC PROJECT CASES 国内项目案例

项目名称: 青岛胶东国际机场

项目地址: 中国-青岛

项目简介: 胶东国际机场(综合交通中心及停车楼)项目采用明挖法施工, 结构底埋深约2.5m, 墙体包裹面约3.5m*0.85m, 总高度约30米, 总重量约20吨, 分段17m+13m配套运输至施工现场。每支钢管柱25mm或16mm厚钢板卷管制作而成。



CASE PRESENTATION

Project name: Qingdao Jiaodong International Airport

Project address: Qingdao, China

Project Brief Description: Jiaodong International Airport (Comprehensive Transportation Center and Parking Building) project adopts open-cut construction method. The buried depth of the structure is about 2.5m, the wrapping surface of the wall is about 3.5m*0.85m, the total height is about 30m, the total weight is about 20t, and it will be transported to the construction site in sections of 17m+13m. Each steel tube column 25mm or 16mm thick steel plate coil tube made of installation.



青岛胶东国际机场
QINGDAO JIAODONG
INTERNATIONAL AIRPORT

DOMESTIC PROJECT CASES

国内项目案例

项目名称：青岛海上嘉年华

项目地址：中国-青岛

项目简介：青岛海上嘉年华项目位于黄岛区凤凰岛旅游度假区，是全方位多功能大型商、住、旅游综合体，其中钢结构屋盖由鑫光正承建。



CASE PRESENTATION

Project name: Qingdao Sea Carnival

Project address: Qingdao, China

Project Brief Description: Qingdao Sea Carnival project is located in the Huangdao District Of Phoenix Island tourism resort, is a comprehensive multi-functional large-scale commercial, residential, tourism complex, in which steel structure roof by XGZ contracted to build.



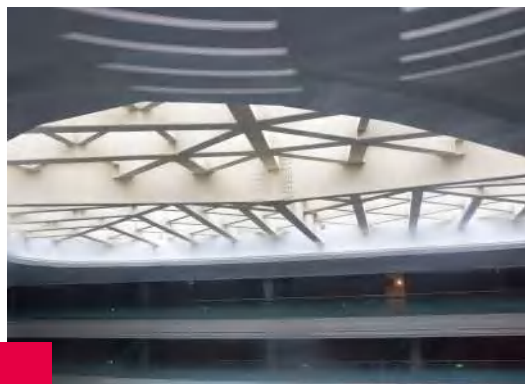
青岛海上嘉年华
QINGDAO SEA CARNIVAL

DOMESTIC PROJECT CASES 国内项目案例

项目名称：金地世纪城

项目地址：中国-青岛

项目简介：项目总占地面积54000平方米，涵盖五星级酒店、影院、超市、餐饮娱乐、主题商业、酒店式公寓、SOHO办公、住宅等丰富业态，我公司承接五星酒店采光顶、宴会厅、连廊钢结构、网架设计施工，现已成为青岛北部标志性建筑群落。



CASE PRESENTATION

Project name: Golden Century City

Project address: Qingdao, China

Project Brief Description: The project covers a total area of 54,000 square meters, covering five-star hotels, cinemas, supermarkets, catering and entertainment, theme business, serviced apartments, SOHOs office, residences and other rich business forms. Our company undertakes the design and construction of five-star hotel lighting roof, banquet hall, steel structure of connecting corridor, and grid frame, which has become the landmark building community in northern Qingdao.



金地世纪城
GOLDEN CENTURY CITY

DOMESTIC PROJECT CASES 国内项目案例

项目名称：青岛农业大学（平度校区）

项目地址：中国-青岛

项目简介：该项目位于山东省平度市南村镇，总占地面积约1000亩，总建筑面积约30000平方米。整个校区包含30个单体，部分单体含有钢结构工程。其中施工难度较大的是位于1#图书馆采光顶的钢屋盖，总用钢量约125吨，跨度36米，高度42米。景观塔单体工程高度47米，总吨位240T，单支钢柱21米重达18T，结构造型复杂，线条美观大方，为院区标志性建筑。



CASE PRESENTATION

Project name: Qingdao Agricultural University(Pingdu Campus)

Project address: Qingdao, China

Project Brief Description: The project is located in Nancun Town, Pingdu City, Shandong Province, with a total area of about 1000 mu and a total construction area of about 30,000 square meters. The whole campus contains 30 monomers, some of which contain steel structure engineering. Landscape tower single project height of 47 meters, a total tonnage of 240T, a single steel column of 21 meters weight up to 18T, complex structure, beautiful lines and generous, for the landmark building of the campus.



青岛农业大学（平度校区）
QINGDAO AGRICULTURAL
UNIVERSITY(PINGDU CAMPUS)

DOMESTIC PROJECT CASES

国内项目案例

项目名称: 鲁能泰山俱乐部

项目地址: 中国-济南

项目简介: 山东鲁能泰山队是中国顶级联赛传统豪门, 鑫光正承接俱乐部体育看台和七人制足球场项目, 看台为钢管桁架张拉膜结构, 建筑面积1550平方米, 七人制足球场为大跨度3排式钢管桁架结构, 跨度为54米, 檐高16.6米, 梁高3米。



CASE PRESENTATION

Project name: Luneng Taishan F.C.

Project address: Jinan, China

Project Brief Description: Shandong Luneng Taishan Team is a traditional elite team in China's top league. XGZ is taking over the sports stands of the club and the seven-a-side football field project. The stands are steel tube truss tension-brane structure with a construction area of 1550m².



鲁能泰山俱乐部
LUNENG TAISHAN F.C.

DOMESTIC PROJECT CASES 国内项目案例

项目名称：青岛宜家家居

项目地址：中国-青岛

项目简介：宜家家居是来自瑞典的全球知名家具和家居零售商，世界最大的家居供应商。青岛宜家家居商场钢结构屋盖项目由我公司承建施工，建筑面积约28110平方米，单桁架跨度24米，由工厂整体运输至现场，整体吊装就位。

CASE PRESENTATION

Project name: Qingdao IKEA

Project address: Qingdao, China

Project Brief Description: IKEA is a global furniture brand and home furnishing retailer across the world. IKEA shopping mall roof project is constructed by Qingdao Xinguangzheng Steel Structure, construction area is about 28110m², single truss span is 24m, which was fabricated in our factory, delivered to the site and finished erection integrally.



青岛宜家家居
QINGDAO IKEA

DOMESTIC PROJECT CASES 国内项目案例

项目名称：青岛万汇产业园一期

项目地址：中国-青岛

项目简介：青岛万汇产业园一期项目于2020年10月1日全面交付使用，本项目工程建筑面积约85000平方米，施工内容包括：土建工程、钢结构安装工程，装饰装修工程、室外综合管网工程、室外配套工程。万汇产业园一期项目建筑面积、综合程度、单位工程造价、施工进度在我公司近几年工程中首屈一指，充分体现了我公司的总承包实力。

CASE PRESENTATION

Project name: Qingdao ACTIVA Industrial Park Phase I

Project address: Qingdao, China

Project Brief Description: The first-phase project of Qingdao ACTIVA Industrial Park is fully put into use on October 1, 2020. The construction area is 85,000 square meters. Construction scope includes civil work, steel structure installation, decoration engineering, outdoor comprehensive pipe network and outdoor supporting engineering. The construction area, integrated solution, unit cost control and construction speed are industry leader, which fully reflect our company's general contracting strength.



青岛万汇产业园一期
QINGDAO ACTIVA INDUSTRIAL
PARK PHASE I

DOMESTIC PROJECT CASES 国内项目案例

项目名称：青岛新力通工业

项目地址：中国-青岛

项目简介：该项目位于衡阳路中段路北，由青岛新力通工业有限责任公司与我国军工高温材料领域权威央企—北京钢研高纳科技股份有限公司合作总投资10亿元设立，占地130亩，主要生产高温合金材料和全世界正在强制推行的超临界电力锅炉的关键部件。

CASE PRESENTATION

Project name: Qingdao NPA Industry Co.Ltd

Project address: Qingdao, China

Project Brief Description: Located in the north of the middle section of Hengyang Road, the project is set up by Qingdao NPA Industry Co., Ltd. and Beijing CISRI-Gaona Materials & Technology Co., Ltd., an authority enterprise in the field of military high-temperature Materials, with a total investment of 1 billion yuan. The project covers an area of 130 mu, mainly producing high-temperature alloy Materials and key components of the supercritical electric boiler that is being forced to be implemented all over the world jobs will be created.



青岛新力通工业
QINGDAO NPA INDUSTRY CO.LTD

DOMESTIC PROJECT CASES 国内项目案例

项目名称：青岛征和工业园

项目地址：中国-青岛

项目简介：青岛征和工业是汽车链行业领军企业之一，国家认定企业技术中心、国家技术创新示范企业和国家级高新技术企业，中国链传动行业首家A股上市公司。青岛征和工业园西区车间面积11040平方米、附楼工程面积2467.4平方米。此项目包括土建、钢构、消防、水电暖、内外墙装饰、电动通风气楼等多项施工内容，其中墙面采用的幕墙式四企口盒子PU板是青岛地区首例工程。

CASE PRESENTATION

Project name: Qingdao CHOHO Industrial Park

Project address: Qingdao, China

Project Brief Description: Qingdao Choho Industrial Co., Ltd., one of the leading enterprises in the automotive chain industry, is the national enterprise technology center, the national technological innovation demonstration enterprise and the national high-tech enterprise. The west section of Qingdao Choho Industrial Park covers an area of 11040 m², and the auxiliary building project covers an area of 2467.4 m².



青岛征和工业园
QINGDAO CHOHO
INDUSTRIAL PARK

DOMESTIC PROJECT CASES 国内项目案例

项目名称：青岛航空技术研究院

项目地址：中国-青岛

项目简介：青岛航空技术研究院暨中国科学院工程热物理研究所青岛研究中心，是国内唯一具有轻型发动机自主研发能力的试验平台、唯一具备航空发动机部件级高空试验能力的试验基地，由鑫光正重点承建结构强度实验室、试制快反中心、无人机总装调试实验室，从钢柱进场安装至网架安装结束总有效时间33天完工。

CASE PRESENTATION

Project name: Qingdao Institute of Aeronautical technology

Project address: Qingdao, China

Project Brief Description: Qingdao Institute of Aeronautical Technology (QIAT) & Institute of Engineering Thermophysics Chinese Academy of Sciences-Qingdao Research Center, which is the unique test platform and base having the ability of independent R&D and high altitude test on aero-engine components. Qingdao Xinguangzheng undertakes Structural Strength Lab, Trial Rapid-response Center and UAV Assembly Test Lab. All installation work were finished within 33 days, including the entry of steel columns on site till the end of space frame erection.



青岛航空技术研究院
QINGDAO INSTITUTE OF
AERONAUTICAL TECHNOLOGY

DOMESTIC PROJECT CASES 国内项目案例

项目名称：青岛智龙包装设备有限公司

项目地址：中国-青岛

项目简介：青岛智龙包装设备有限公司建设项目为高端智能化工厂，本项目共分为两期建设，共5个厂房，其中一期厂房建筑面积5万平方米，二期建筑面积3万平方米，该项目外墙采用75厚四面企口金属面复合幕墙板，屋面为360°咬合屋面板，车间窗户采用双层中空断桥隔热窗。

CASE PRESENTATION

Project name: Qingdao Zhilong Packaging Equipment Co., Ltd

Project address: Qingdao, China

Project Brief Description: Qingdao Zhilong Packaging Equipment Co., LTD. It is a high-end intelligent factory including five workshops totally, this project will be divided into two phases: 50,000sqm workshop on first phase and second phase is 30,000sqm. The wall panels are 75mm thickness all around tongue-and-groove curtain panels, roof is 360 ° bite roof board, workshop window using double insulating window of the heat insulation.



青岛智龙包装设备有限公司
QINGDAO ZHILONG PACKAGING
EQUIPMENT CO., LTD

DOMESTIC PROJECT CASES 国内项目案例

项目名称：青岛富高科汽车配件厂房

项目地址：中国-青岛

项目简介：本项目是由日韩合资，项目地点位于平度同和街道办事处柳州路与太原路交叉路口，主要经营汽车配件加工。富高科项目于2020年11月份竣工，1#厂房建筑面积约12000平方米，为门式钢架结构，最大跨度40米。

CASE PRESENTATION

Project name: Qingdao Fukoku Auto Parts Plant

Project address: Qingdao, China

Project Brief Description: The project is located at the intersection of Liuzhou Road and Taiyuan Road in Pingdu City, mainly engaged in auto parts processing. The project has been completed in November 2020, with a building area of 12000m² and a portal steel frame structure with a maximum span of 40m.



青岛富高科汽车配件厂房
QINGDAO FUKOKU AUTO
PARTS PLANT PROJECT

DOMESTIC PROJECT CASES

国内项目案例

项目名称：青岛海佳机械厂房

项目地址：中国-青岛

项目简介：青岛海佳机械参与了中国纺织机械行业标准的起草和制订，是织机行业协会会长单位，中国喷水织机行业龙头企业。此项目由钢结构生产车间和混凝土结构辅房组成，总建筑面积26134.6平方米，总长度161.68米，总跨度162.615米。

CASE PRESENTATION

Project name: Qingdao Haijia Machinery Plant

Project address: Qingdao, China

Project Brief Description: Qingdao Haijia Machinery has participated in the drafting and formulation of China textile machinery industry standards, is the president of the loom industry association, China's water jet loom industry leading enterprises. This project consists of steel structure production workshop and concrete structure auxiliary house, with a total construction area of 26134.6m², a total length of 161.68m and a total span of 162.615m.



青岛海佳机械厂房
QINGDAO HAIJIA
MACHINERY PLANT

DOMESTIC PROJECT CASES 国内项目案例

项目名称：中科院长春应化所青岛研发基地一期

项目地址：中国-青岛

项目简介：中科院长春应化所青岛研发基地一期工程位于青岛市城阳区。我司负责施工轻质合金孵化车间2号车间，建筑面积约16000平方米，耐火要求高为一级。墙面、门窗、屋面均要求防爆措施。墙面外板采用兼强板新型材料施工方法，屋面外板采用防爆安装。

CASE PRESENTATION

Project name: Changchun Institute of Applied Chemistry, Chinese Academy of Sciences Qingdao R & D Base Phase I

Project address: Qingdao, China

Project Brief Description: Changchun Institute of Applied Chemistry Chinese Academy of Sciences, located in Chengyang District, Qingdao City. We undertook the light-weight alloy incubation workshop, its construction area is 16000m², fire resistance rating grade one. All roofs, walls, windows and doors are requested to have effect of explosion prevention. Latest JANQNG panel was used in the exterior wall construction, and explosion protection system on roof.



中科院长春应化所青岛研发基地一期
CHANGCHUN INSTITUTE OF APPLIED
CHEMISTRY, CHINESE ACADEMY OF
SCIENCES QINGDAO R & D BASE PHASE I

DOMESTIC PROJECT CASES 国内项目案例

项目名称: 牧原莘县养猪场
项目地址: 中国-莘县



CASE PRESENTATION

Project name: Muyeuan Shenxian Pig Farm
Project address: Shenxian, China



牧原莘县养猪场
MUYUAN SHENXIAN PIG FARM

DOMESTIC PROJECT CASES 国内项目案例

项目名称：新希望六和养猪场
项目地址：中国-高密



CASE PRESENTATION

Project name: New Hope Liuhe Pig Farm
Project address: Gaomi, China



新希望六和养猪场
NEW HOPE LIUHE PIG FARM

INTERNATIONAL PROJECT CASE PRESENTATION

国际项目案例展示

项目名称：乌拉圭奥迪展厅

项目地址：乌拉圭首都-蒙得维的亚

项目简介：乌拉圭奥迪项目的建筑面积为4587平方米，包括展厅，车间，是乌拉圭首都的第一个奥迪4S店，展厅部分为桁架结构，车间部分为门式钢架。墙面维护均为100mm厚的大玻璃聚氨酯复合板，还有部分铝塑板装修，屋面为100mm泡沫复合板（20KG泡沫）。

CASE PRESENTATION

Project name: Audi Exhibition Hall in Uruguay

Project address: Montevideo, Uruguay

Project Brief Description: The project building area is 4,587 square meters. It contains exhibition hall and workshop, and is the first Audi 4S shop in Montevideo, the frame of the exhibition hall part is truss structure, while that of the workshop is portal steel frame. The wall enclosure is made of 100mm thick PU composite panel and sandwich panel; the roof enclosure made of 100mm thick foam composite panel (weight of foam 20kg).



乌拉圭奥迪展厅
AUDI EXHIBITION HALL IN URUGUAY

INTERNATIONAL PROJECT CASE PRESENTATION

国际项目案例展示

工程名称: 巴西展厅
项目地址: 巴西

CASE PRESENTATION

Project name: Exhibition Hall
Project address: Brazil



巴西展厅
EXHIBITION HALL IN BRAZIL

INTERNATIONAL PROJECT CASE PRESENTATION

国际项目案例展示

项目名称: 乌拉圭体育馆
项目地址: 乌拉圭-蒙得维的亚
建筑面积: 1526平方米
主钢构: H型钢+2遍白漆
屋面和墙面: 彩钢瓦+玻璃丝棉被

CASE PRESENTATION

Project name: Steel Structure Sports Hall
Project address: Montevideo, Uruguay
Construction Area: 1526 square meters
Main Steel Frame: H columns and beams with white painting
Roof and Wall: Steel sheet + glass wool insulation



乌拉圭体育馆
STEEL STRUCTURE SPORTS HALL

INTERNATIONAL PROJECT CASE PRESENTATION

国际项目案例展示

工程名称: 荷兰展厅项目

项目地址: 荷兰-布雷达

建筑面积: 3100平方米

项目简介: 前面采用大面积玻璃幕墙, 墙板为780型横向大波浪板。

CASE PRESENTATION

Project name: Showroom in Netherlands

Project address: Breda, Netherlands

Floorage: 3100 square meters

Project Brief Description: A large glass curtain wall is used in the front, The wall panel is a 780 type horizontal large wave panel.



荷兰展厅

EXHIBITION HALL IN NETHERLANDS

INTERNATIONAL PROJECT CASE PRESENTATION

国际项目案例展示

项目名称：阿鲁巴展厅

项目地址：阿鲁巴

项目简介：阿鲁巴展厅项目，建筑面积1585平方米，展厅部分为2层框架结构，仓库部分为门式
钢结构。展厅部分墙面为玻璃幕墙等造型，仓库部分为水泥泡沫板，屋面为聚氨酯复合板。

CASE PRESENTATION

Project name: Exhibition Hall

Project address: Aruba

Project Brief Description: Aruba exhibition hall project, a construction area of 1585 square meters, part of the exhibition hall is a 2-storey frame structure, the warehouse part is a gantry steel frame structure. Part of the wall of the exhibition hall is glass curtain wall, the warehouse part is cement foam board, and the roof is polyurethane composite board.



阿鲁巴展厅
EXHIBITION HALL IN ARUBA

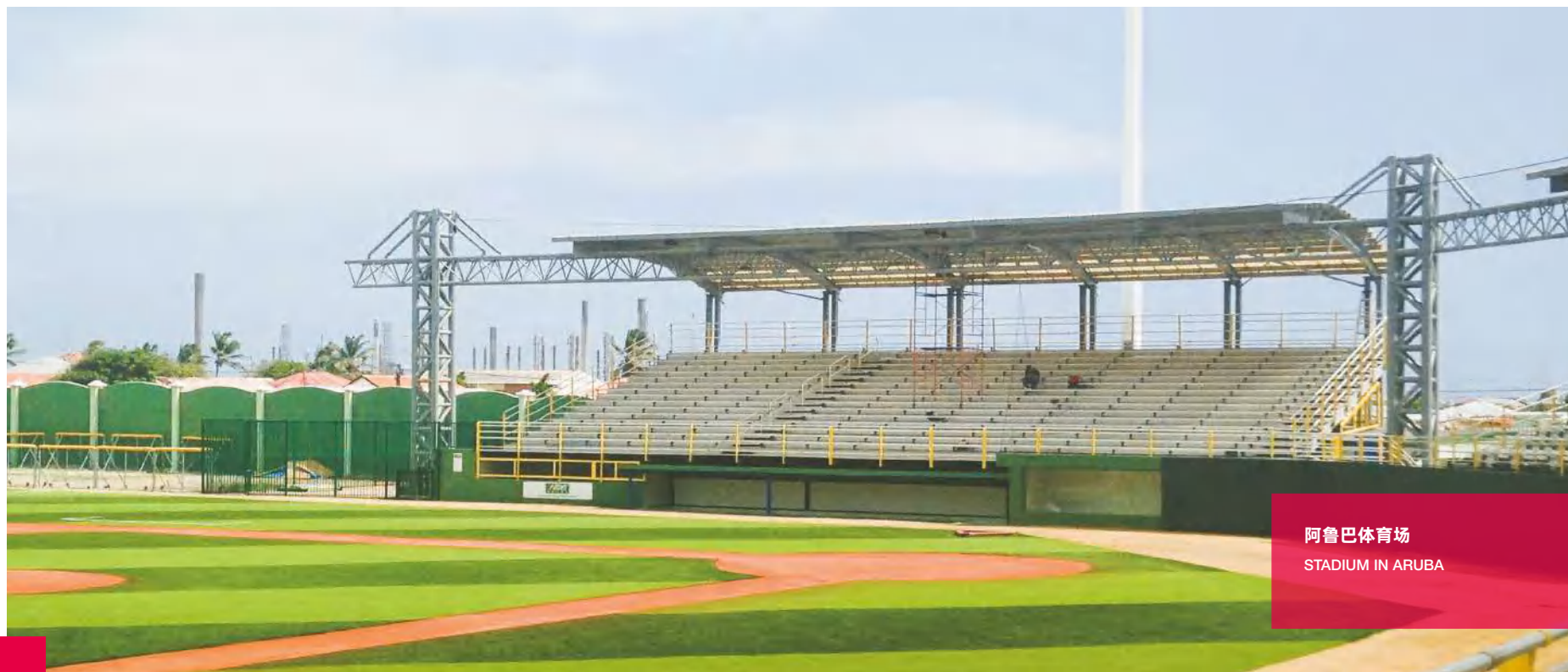
INTERNATIONAL PROJECT CASE PRESENTATION

国际项目案例展示

项目名称: 阿鲁巴体育场
项目地址: 阿鲁巴
项目简介: 跨度: 127米
檐高: 9.14米
用钢量: 62.357吨
造型: 管桁架

CASE PRESENTATION

Project name: Stadium in Aruba
Project address: Aruba
Project Brief Description: Bay spacing: 127m
Eave height: 9.14m
Steel amount: 62.357ton
Technical scope/Frame type: Pipe truss structure



阿鲁巴体育场
STADIUM IN ARUBA

INTERNATIONAL PROJECT CASE PRESENTATION

国际项目案例展示

项目名称：所罗门办公室项目

项目地址：所罗门群岛-霍尼亚拉

项目简介：所罗门办公室项目为二层框架结构，建筑面积1500多平方米，其中一层维护为铝塑板幕墙及部分玻璃幕墙，二层维护为玻璃幕墙，屋顶为玻璃丝棉复合板，女儿墙部分为铝塑板造型。

CASE PRESENTATION

Project name: Office Project in the Solomon Islands

Project address: Honiara, Solomon Islands

Project Brief Description: This project is a 2 floors frame, with a building area of 1500sqm. Ground floor covers aluminum composite panel and glass curtain wall, while first floor is glass curtain wall. The roof material is glass wool sandwich panel, and part of parapet wall is also aluminum composite panel.



所罗门办公室

OFFICE IN THE
SOLOMON ISLANDS

INTERNATIONAL PROJECT CASE PRESENTATION

国际项目案例展示

工程名称: 安哥拉超市
项目地址: 安哥拉

CASE PRESENTATION

Project name: Supermarket
Project address: Angola



INTERNATIONAL PROJECT CASE PRESENTATION

国际项目案例展示

项目名称：巴拿马圣地亚哥商场
项目地址：巴拿马

CASE PRESENTATION

Project name: Santiago Mall Panama
Project address: Panama



巴拿马圣地亚哥商场
SANTIAGO MALL PANAMA

INTERNATIONAL PROJECT CASE PRESENTATION

国际项目案例展示

项目名称: 哥斯达黎加超市

项目地址: 哥斯达黎加

工程面积: 5315平方米

工程尺寸: 96*50*7.5米

项目概况: 此项目为门刚结构,局部二层, 墙面屋面均为玻璃丝棉现场复合结构, 主钢架两遍漆。

CASE PRESENTATION

Project Name: Costa Rica Supermarket

Project Address: Costa Rica

Construction Area: 5315 square meters

Project Brief Description: Portal frame structure with mezzanine in part. Roof and wall are color-coated steel sheets and fiberglass wool as insulation.



哥斯达黎加超市
SUPERMARKET IN COSTA RICA

INTERNATIONAL PROJECT CASE PRESENTATION

国际项目案例展示

项目名称：乌拉圭PRE仓库

项目地址：乌拉圭-蒙得维的亚

项目简介：此建筑建筑面积为1200平方米，普通门钢结构带有女儿墙，屋顶带有自主设计的通风气楼，带有局部二层平台（办公室使用），墙面屋面均为聚氨酯复合板，窗户为断桥隔热的推拉窗户，车间入口为聚氨酯提升门。

CASE PRESENTATION

Project name: Pre Warehouse in Uruguay

Project address: Montevideo, Uruguay

Project Brief Description: This warehouse project covers 1200sqm with mezzanine office inside, roof & wall are PU sandwich panels and self-designed ventilation monitor on the roof, thermal insulation sliding window.



乌拉圭PRE仓库
PRE WAREHOUSE IN URUGUAY

INTERNATIONAL PROJECT CASE PRESENTATION

国际项目案例展示

项目名称：以色列检测厂

项目地址：以色列

项目简介：该项目面积为610平方米，地址位于以色列，于2020年完工，用途：汽车检测。该项目结构采用蜂窝梁加方管桁架形式，构件表面采用热镀锌处理。

CASE PRESENTATION

Project name: Testing Plant in Israel

Project address: Israel

Area:610 square meters

Completion time:the year of 2020

Application:Car testing center

This project adopts circle-castellated steel beams and square tube trusses,all structures were treated with hot-dip galvanized.



以色列检测厂
TESTING PLANT IN ISRAEL

INTERNATIONAL PROJECT CASE PRESENTATION

国际项目案例展示

项目名称: 阿尔及利亚物流车间

项目地址: 阿尔及利亚-塞提夫

屋顶、墙面: 玻璃幕墙、铝塑复合板、赤陶板

办公室: 石膏板吊顶、玻璃隔断、玻璃门、油漆等

结构体系: 箱形柱

面积: 3000平方米-3层楼, 带办公

CASE PRESENTATION

Project name: Logistics Workshop in Algeria

Project address: Setif, Algeria

Roof and wall: Curtain glass, alu composite panel, Terracotta panel

Office: Gypsum board ceiling, glass partition, glass door, painting etc.

Structure System: Box column

Area: 3000 square meters -3 Floor building with office



阿尔及利亚物流车间
LOGISTICS WORKSHOP IN ALGERIA

INTERNATIONAL PROJECT CASE PRESENTATION

国际项目案例展示

项目名称：埃塞俄比亚水厂

项目地址：埃塞俄比亚

项目简介：该项目主要用于瓶装水生产加工，7300余平方米，带夹层办公室和女儿墙。整体布局规划科学合理，配置配套完善，车间内有配套照明、监控、消防；办公大厅为精装修，主要包含地砖、墙砖、瓷砖、吊顶、玻璃幕墙、门窗配套等。



CASE PRESENTATION

Project name: Water Factory in Ethiopia

Project address: Ethiopia

Project Brief Description: The project is mainly used for bottled water production and processing, more than 7300 square meters, with mezzanine office and parapet. The overall layout planning is scientific and reasonable, and the configuration is perfect. There are supporting lighting, monitoring and fire fighting in the workshop. The office hall is elaborately decorated, mainly including floor tiles, wall tiles, ceramic tiles, ceiling, glass curtain wall, doors and Windows, etc.



埃塞俄比亚水厂
WATER FACTORY IN ETHIOPIA

INTERNATIONAL PROJECT CASE PRESENTATION

国际项目案例展示

项目名称: 尼日尔飞机库

项目地址: 尼日尔

项目简介:

- 1、总建筑面积:2452平方米,跨度:40米,檐高:8米,脊高:9米,用钢量:115吨
- 2、特殊要求: 大门洞造型, 电动折叠推拉门。

CASE PRESENTATION

Project name: Hangar in Niger

Project address: Niger

Project Brief Description:

1. Total built-up area: 2452 square meters, Bay Spacing: 40m, Eave height: 8m, Ridge height: 9m, Amount of steel materials: 115 ton
2. Special requirements: Gate opening form, electrical folded pushing gates.



尼日尔飞机库
HANGAR IN NIGER

INTERNATIONAL PROJECT CASE PRESENTATION

国际项目案例展示

项目名称: 澳大利亚飞机库

项目地址: 澳大利亚

项目简介: 长度: 39米, 高度: 32米, 屋檐高度: 7.5米, 间隔数: 5, 间隔大小: 5米&7米, 钢结构飞机库外形美观, 设备齐全, 保温隔热。



CASE PRESENTATION

Project name: Hangar in Australia

Project address: Australia

Project Brief Description: Length: 39 meters, height: 32 meters, eaves height: 7.5 meters, number of intervals: 5, interval size: 5 meters & 7 meters, The steel structure hangar has beautiful appearance, complete equipment, heat preservation and heat insulation.



澳大利亚飞机库
HANGAR IN AUSTRALIA

INTERNATIONAL PROJECT CASE PRESENTATION

国际项目案例展示

项目名称：斯里兰卡发电厂

项目地址：斯里兰卡

项目简介：Lakvijaya电厂是斯里兰卡最大的电厂，是承担风障工程钢结构材料的公司。

CASE PRESENTATION

Project name: Power Plant in Sri Lanka

Project address: Sri Lanka

Project Brief Description: Lakvijaya power plant, the largest power plant in Sri Lanka, is the company that undertakes the steel structure materials of wind barrier project.



斯里兰卡发电厂
POWER PLANT IN SRI LANKA

INTERNATIONAL PROJECT CASE PRESENTATION

国际项目案例展示

项目名称: 巴基斯坦化工厂
项目地址: 巴基斯坦-拉合尔
项目简介: 项目面积:4225平方米
项目完成时间: 2019-2020年建成
项目内容: 多层钢结构
工程总钢重: 600吨



CASE PRESENTATION

Project name: Pakistan Chemical Factory
Project address: Lahore, Pakistan
Project Area: 4225 square meters
Project Finished Time: Built in 2019-2020
Project Detail: Multi-story steel structures
Project Total Steel weight: 600 tons

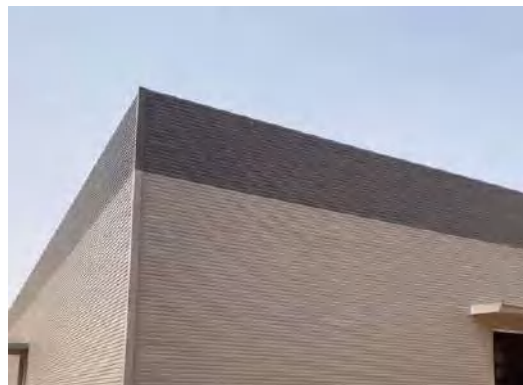


巴基斯坦化工厂
PAKISTAN CHEMICAL FACTORY

INTERNATIONAL PROJECT CASE PRESENTATION

国际项目案例展示

项目名称：阿尔及利亚药品仓库
项目地址：阿尔及利亚-奥兰
项目简介：尺寸:104*94*8.5m
总建筑面积：9776平方米
前台和办公室部分：玻璃幕布和铝制玻璃幕布



CASE PRESENTATION

Project name: Drug Warehouse in Algeria
Project address: Oran, Algeria
Project Brief Description: size:104*94*8.5m,total building
area: 9776 square meters
Front and office part: Glass Curtain and Aluminum Glass Curtain



阿尔及利亚药品仓库
DRUG WAREHOUSE
IN ALGERIA

INTERNATIONAL PROJECT CASE PRESENTATION

国际项目案例展示

项目名称: 阿尔及利亚厂房

项目地址: 阿尔及利亚

尺寸: 105m*24m*11m, 带两台5吨行车

主钢构: 焊接H型钢, 2遍中灰漆

屋面和墙面檩条: 镀锌

屋面和墙面板: EPS复合板, 厚度50mm



CASE PRESENTATION

Project name: Plant in Algeria

Project address: Algeria

Specification: 105m*24m*11m, with 2 sets cranes (lifting weight is 5 tons)

Main Steel Structure: Welded H section steels with grey painting

Roof and Wall Purlin: C and Z purlins with galvanization surface treatment

Roof and Wall Panel: EPS sandwich panel, thickness is 50mm



阿尔及利亚厂房
PLANT IN ALGERIA

INTERNATIONAL PROJECT CASE PRESENTATION

国际项目案例展示

项目名称：阿尔及利亚砖厂
项目地址：阿尔及利亚-奥兰
项目简介：一号厂房建筑面积为3396m²，二号厂房建筑面积为10363m²。采用普通的门式钢架结构，墙面屋面均用0.6mm单瓦，用于生产空心砖。

CASE PRESENTATION

Project name: Brick Factory in Algeria
Project address: Oran, Algeria.
Project Brief Description: The building area of No. 1 workshop is 3,396 square meters, and the building area of No. 2 workshop is 10,363 square meters. The ordinary steel frame structure is adopted, and the wall and roof are all 0.6mm single tile, which is used for producing hollow bricks.



阿尔及利亚砖厂
BRICK FACTORY IN ALGERIA

INTERNATIONAL PROJECT CASE PRESENTATION

国际项目案例展示

项目名称: 埃塞俄比亚重工厂房

项目地址: 埃塞俄比亚-亚的斯亚贝巴

项目简介: 由青岛鑫光正钢结构公司在埃塞俄比亚承建的重工厂房, 总面积达12000平米, 长度为230米, 宽56米, 高为20米。我们为整个项目提供设计, 生产, 安装, 包括25T 起重机和电力系统, 屋顶采用0.5mm规格的压型瓦和采光带, 墙面采用0.5mm的压型瓦, 包括门窗。



CASE PRESENTATION

Project name: Industrial Heavy Steel Workshop in Ethiopia

Project address: Addis Ababa, Ethiopia

Project Brief Description: One of Ethiopian industrial heavy steel workshops is did by Qingdao XGZ steel structure production completely, the size is 230m x 56m x 20m (H), total 12000sqm. We supplied the design, produce, construction with 25t cranes and electrical system. The roof with monitor is 0.5mm colourful sheet with skylight, the wall is 0.5mm sheet with windows and doors.



埃塞俄比亚重工厂房
ETHIOPIA INDUSTRIAL HEAVY
STEEL WORKSHOPS

INTERNATIONAL PROJECT CASE PRESENTATION

国际项目案例展示

项目名称：埃塞俄比亚服装厂项目

项目地址：埃塞俄比亚

项目简介：埃塞俄比亚服装厂工业园区项目包含厂房车间、员工宿舍及别墅等，建筑面积100000平方米。我们提供规划、设计、制作。



CASE PRESENTATION

Project name: Garment Factory Project in Ethiopia

Project address: Ethiopia

Project Brief Description: Garment Factory Project in Ethiopia contains workshop, staff quarters and villas. Total area is 100,000 square meters. We offer planning, designing, producing.



埃塞俄比亚服装厂
GARMENT FACTORY IN ETHIOPIA

INTERNATIONAL PROJECT CASE PRESENTATION

国际项目案例展示

项目名称: 巴基斯坦瓷砖厂和可乐厂

项目地址: 巴基斯坦首都-伊斯兰堡

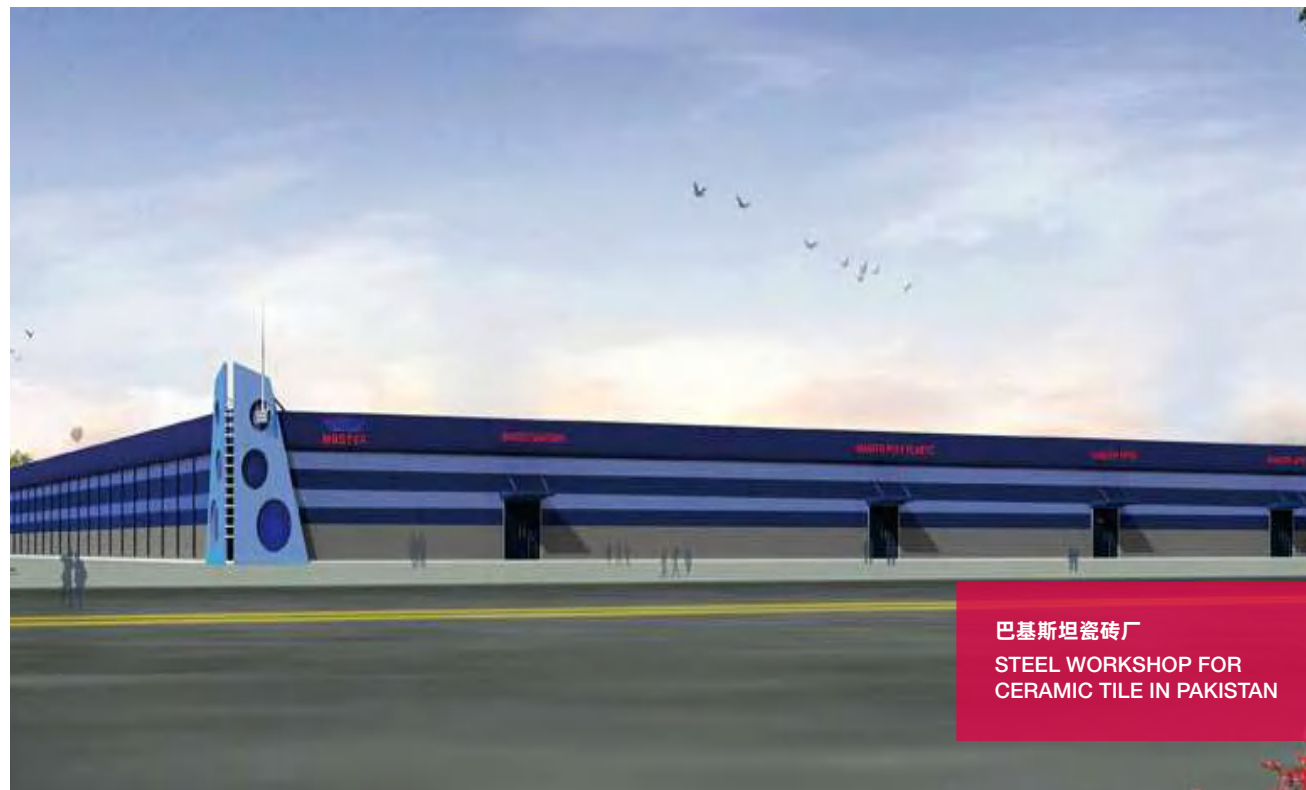
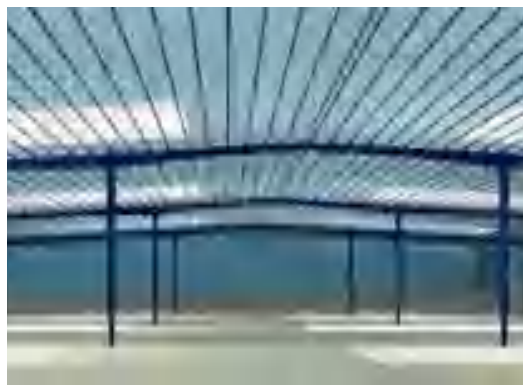
项目简介: 巴基斯坦瓷砖厂项目的建筑面积为49500平米, 可乐厂项目建筑面积为23000平方米, 维护部分颜色特殊, 女儿墙外底凸圆弧, 内含冷库部分需要用冷库特殊材料.

CASE PRESENTATION

Project name: Tile and Coke factory

Project address: Islamabad, Pakistan

Project Brief Description: The ceramic tile factory is 49,500sqm, coke factory is 23,000sqm with cold room inside of factory.



巴基斯坦瓷砖厂
STEEL WORKSHOP FOR
CERAMIC TILE IN PAKISTAN

INTERNATIONAL PROJECT CASE PRESENTATION

国际项目案例展示

项目名称：阿尔及利亚的电视机车间和办公室

项目地址：阿尔及利亚-塞提夫

项目简介：阿尔及利亚Lot4项目的建筑面积为20160平方米，主要用途为电视生产，主体框架为箱型柱。墙面、屋面维护均为1000型 0.5/50/0.4mm PU复合板，还有部分玻璃幕墙装修。

CASE PRESENTATION

Project name: TV Factory Building in Algeria

Project address: Setif, Algeria

Project Brief Description: The Lot4 project in Algeria has a building area of 20,160 square meters, the building is mainly for television production, its main frame is box column. The enclosure of wall and roof is made of type 1000 0.5/50/0.4mm PU composite panels, and part of the enclosure is glass curtain wall.



阿尔及利亚的电视机车间和办公室
TV FACTORY BUILDING IN ALGERIA

INTERNATIONAL PROJECT CASE PRESENTATION

国际项目案例展示

项目名称: 牙买加面包房

项目地址: 牙买加

项目简介: 长42米, 宽12米, 单坡, 檐高6米, 脊高6.75米, 带女儿墙, 局部夹层, 墙面内外板均为50厚的EPS复合板, 屋面外板为0.5mm单瓦+75厚玻璃丝绵卷(带铝箔纸)+钢丝网现场复合, 屋面板50后的EPS复合板, 办公室PVC吊顶。

CASE PRESENTATION

Project name: Jamaica bakery

Project address: Jamaica

Project Brief Description: 42 meters long, 12 meters wide, single slope, 6 meters high eaves, 6.75 meters high ridge, parapet, partial interlayer, 50-thick EPS composite board for both inside and outside walls, 0.5mm single tile +75 fiber glass wool insulation(with aluminum foil paper) + steel wire mesh field composite, 50-thick EPS composite board for inside roof, PVC ceiling for office.



牙买加面包房
JAMAICA BAKERY

INTERNATIONAL PROJECT CASE PRESENTATION

国际项目案例展示

项目名称：澳大利亚仓库
项目地址：澳大利亚

CASE PRESENTATION

Project name: Warehouse in Australia
Project address: Australia



澳大利亚仓库
WAREHOUSE IN AUSTRALIA

INTERNATIONAL PROJECT CASE PRESENTATION

国际项目案例展示

项目名称：PNG养牛场

项目地址：巴布亚新几内亚

项目简介：该项目是一个综合性养殖项目，包含警卫室、水房、拖拉机棚、车库、发电室、粮食储藏室、甘草仓库、乳牛区、母牛区、特殊棚子、断奶棚、挤奶棚、治疗室、牛行道、奶制品加工厂等，是从养殖到生产加工的一整套系统。



CASE PRESENTATION

Project name: Cattle Farms in Papua New Guinea

Project address: Papua New Guinea

Project Brief Description: This project is an integrated farming project, it includes guard house, water room, tractor shed, garage, generator room, grain storage, hay loft, cow shed, heifers shed, special need shed, calves shed, milking parlor, treatment room, cattle walkway, dairy processing plant, etc., is a complete system from breeding to production and processing factory, etc.



PNG养牛场
CATTLE FARMS
IN PAPUA NEW GUINEA

INTERNATIONAL PROJECT CASE PRESENTATION

国际项目案例展示

项目名称:菲律宾鸡舍项目

项目地址:菲律宾-达沃

项目简介:本项目为菲律宾鸡舍项目,项目结构形式为门式钢架体系,整体结构和设备都由我们公司设计并提供,对环境、温控、喂料、饮水、清粪等均采用集约化管理和自动化控制,目前该项目运营良好,其中肉鸡舍已出多批鸡,存活率达到98.9%,创造了客户历年养殖存活最高记录。



CASE PRESENTATION

Project name: Chicken Coop Project in Philippines

Project address: Davao, Philippines

Project Brief Description: The project is used as chicken coop with portal steel frame. We design and provide the overall structure and equipment, and the stages of condition control, temperature control, feeding(food & water), cleaning are all automated. Now the project runs well, batches of chickens are born from the broiler house, and the survival rate reaches 98.9%, which has created the highest record of breeding by our customer.



菲律宾鸡舍

CHICKEN COOP PROJECT
IN PHILIPPINES

INTERNATIONAL PROJECT CASE PRESENTATION

国际项目案例展示

项目名称: 厄瓜多尔鸡舍

项目地址: 厄瓜多尔

项目细节:

尺寸: 150 * 14米 * 2.55米

钢柱、钢梁: I型钢梁, 热镀锌

檩条: 镀锌Z檩条 屋顶和墙壁: 双面钢板+玻璃纤维保温



CASE PRESENTATION

Project name: Broiler Chicken House with Equipment

Project address: Ecuador

Project Details:

1. Size: 150m*14m*2.55m

2. Steel Column, Beam: I beams with hot dip galvanization

3. Purlin: Galvanization Z Purlins

4. Roof & Walls: Double sides steel sheets +fiberglass insulation



厄瓜多尔鸡舍

CHICKEN HOUSE IN ECUADOR